

# Comprehensive Gynecologic Cancer Care Program



AT THE FOREFRONT  
**UChicago  
Medicine**

## ENSURING THE BEST CARE

- » We work quickly to expedite patient consultations and provide an individualized, comprehensive diagnostic and treatment plan for each patient.
- » Our highly experienced gynecologic oncologic surgeons provide expert surgical treatment for ovarian, uterine, cervical, endometrial and vulvo-vaginal cancers, leveraging the tertiary resources of the region's largest and highest volume comprehensive cancer center.
- » A lead site for NRG Oncology, the nation's foremost cooperative clinical trials group. Our program, led by John Moroney, offers easy access to the largest number of novel therapies for gynecologic cancers in the Chicagoland area.
- » Access to our nationally and internationally known team of specialists who meet weekly in a multidisciplinary conference to discuss cases and treatment plans.
- » A proactive and personalized approach to survivorship and supportive care for both patients and caregivers.

## WE OFFER PATIENTS

- » Expert care through consultations, second opinions, surgery, follow-up care and if necessary, recurrence at multiple locations throughout the Chicagoland and NW Indiana communities. Both in-person and virtual appointments available.
- » A collaborative team-based approach including experts in medical oncology, cancer genetics and radiation oncology for comprehensive treatment planning to optimize care.
- » Pre-treatment consultations with reproductive specialists to address fertility preservation.
- » Individualized treatment plans and distinctive surgical expertise to optimize both recovery and outcomes, including minimally invasive, robotic and fertility-sparing surgery.
- » Access to PRISM, an internationally recognized program in sexual health for gynecologic cancer survivors
- » Gynecologic cancer survivorship expertise that emphasizes a whole person approach. Unique peer support program options available.
- » Coordination of supportive oncology services, including social work, physical therapy, nutrition, wellness and psychosocial support.

**We are committed to working with you to optimize care for your patients.**

I would like to introduce our comprehensive program for patients with gynecologic cancers. Our cutting edge multidisciplinary team is whole-heartedly committed to providing optimal care for patients with ovarian, uterine, cervical, endometrial, vulvar and vaginal cancers.

Throughout the COVID-19 pandemic we have consistently provided timely care in a safe environment that balances novel methods of detecting and treating gynecologic cancers and patient-centered care.

We are excited to offer our unique expertise and work with you every step of the way.

Best regards,

**S. Diane Yamada, MD**

*Professor of Obstetrics  
& Gynecology  
Chief, Section of Gynecologic  
Oncology*

## PATIENT CARE LOCATIONS

### Hyde Park

Duchossois Center for Advanced Medicine (DCAM) - Hyde Park  
5758 S. Maryland Ave., Third Floor

### New Lenox

Silver Cross Hospital Campus  
Pavilion A 1890 Silver Cross Blvd., Suite 475

### River East - Chicago

355 E. Grand Ave.

### Orland Park

14290 S. La Grange Road, Third Floor

### Schererville, Indiana

University of Chicago Health Specialists  
222 S. Indianapolis Blvd., Suite 200

### »To make an appointment:

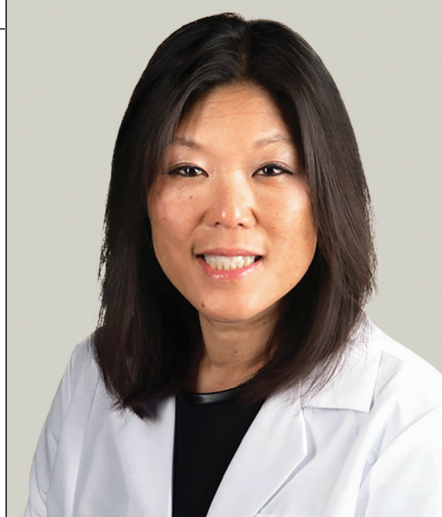
1-888-824-0200

[Cancer.Appointments@uchospitals.edu](mailto:Cancer.Appointments@uchospitals.edu)

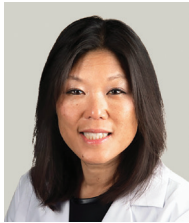
*Patient appointments or consultation*

### »To request information on clinical trials:

[GynOncTrials@bsd.uchicago.edu](mailto:GynOncTrials@bsd.uchicago.edu)



**UCHICAGOMEDICINE.ORG**



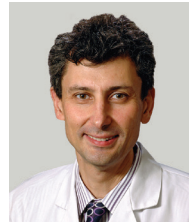
**YAMADA**  
Section Chief



**KIM**



**LEE**



**LENGYEL**  
Chair, OBGYN



**MORONEY**



**MILLS**



**KURNIT**



**ODUNSI**  
Director,  
Cancer Center



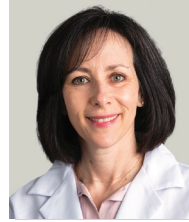
**FLEMING**



**ROMERO**



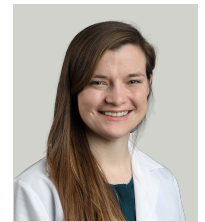
**HASAN**



**LINDAU**



**KEHOE**



**WARD**

## Physicians

### GYNECOLOGIC ONCOLOGY

**S. Diane Yamada, MD**  
Professor of Obstetrics & Gynecology Chief, Section of Gynecologic Oncology

**Gini Fleming, MD**  
Professor of Medicine  
Medical Director, Gynecologic Oncology

**Josephine Kim, MD**  
Assistant Professor of Obstetrics & Gynecology

**Nita Karnik Lee, MD, MPH**  
Associate Professor of Obstetrics & Gynecology

**Ernst Lengyel, MD, MPH**  
Professor of Obstetrics & Gynecology Chair, Department of Obstetrics & Gynecology

**John Moroney, MD**  
Associate Professor of Obstetrics & Gynecology  
Director, Gynecologic Oncology Clinical Trials Program

**Kate Mills, MD**  
Assistant Professor of Obstetrics & Gynecology

**Katherine Kurnit, MD**  
Assistant Professor of Obstetrics & Gynecology

**Adekunle Odunsi, MD, PhD**  
Professor of Obstetrics & Gynecology  
Director, Comprehensive Cancer Center

### CANCER RISK GENETICS

**Iris Romero, MD, MD**  
Professor of Obstetrics & Gynecology

**Andrea Amico, MD**  
Clinical Associate of Medicine,  
Comprehensive Cancer Center at Silver Cross Hospital

### MEDICAL ONCOLOGY

**Simona Chivu, MD**  
Clinical Associate of Medicine,  
Comprehensive Cancer Center at Silver Cross Hospital

**Vinod Kondragunta, MD**  
Clinical Associate of Medicine  
Comprehensive Cancer Center at Silver Cross Hospital and DCAM

**Tabriz Mohammed, DO**  
Clinical Associate of Medicine,  
Comprehensive Cancer Center at Silver Cross Hospital

**Murtuza Rampurwala, MD, MPH**  
Clinical Associate of Medicine,  
Comprehensive Cancer Center at Orland Park

**Shayan Rayani, MD**  
Clinical Associate of Medicine,  
Comprehensive Cancer Center at Silver Cross Hospital

**Ardaman Shergill, MD**  
Assistant Professor of Medicine

### RADIATION ONCOLOGY

**Yasmin Hasan, MD**  
Associate Professor of Radiation & Cellular Oncology

**Daniel W. Golden, MD**  
Assistant Professor of Radiation & Cellular Oncology at Silver Cross Hospital

**Anne R. McCall, MD**  
Associate Professor of Radiation & Cellular Oncology  
Medical Director, Radiation Oncology, Comprehensive Cancer Center at Silver Cross Hospital

**! & i ž Łž ~ +**  
fi2; 622~ 2; 2AA i ~  
@6A; A! ?<3@?<3! -A5<94F

**\$ 6- ?1 < Ł- @Ł- i ~**  
@06 A2 ! ?<3@?<3! -A5<94F

**\$ ~ /Ł Łž ~ +**

**! ?0205! - A29! ~**  
@6A; A! ?<3@?<3\$- 16<94F

**% " \* ' Ł i " Ł&i**

**%A OF Ł6 1- B i ~ i**  
! ?<3@?<3ž / @A2A0@  
~ F; 20<94F -; 1 i 21 06 2  
~ 276 A20@ 820A? ! ?<4? - 6  
/ A24? A62 %2EB- 9! 21 06 2  
! \$/H

**% \$ ~ / Ł ž Łž ~ +**

**fi6-; &B?-4- i ~ i ~ %**  
! ?<3@?<3%B?42?A ( 02 ~ 503  
%20A6; <3~ 2; 2?-9%B?42?F -; 1  
%B?40- 9ž; 0<94F

**ž 062? ~; 4 i ~ @6A; A**  
! ?<3@?<3%B?42?F

**~ 52: <A52?- =F ž B?@2@**

**~ 57046 2~ 208<C05 i %ž \$ž**

**9@ @ fi<5; @; i %ž \$ž**

**fiB92 ŁBAG ! ž \$ž**

**~ <; 6 %A2D - ?A žž**

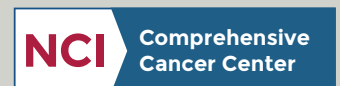
**! 5F@06; @6A; A@**

**i 6 fi25<2 ! ~**

**;; -) -?i ! C**

## Our Services

- » Expert surgical care
- » Laparoscopic and robotic surgery
- » Fertility-sparing surgery and fertility preservation
- » Multidisciplinary approach
- » Cancer Risk Clinic for patients at risk for hereditary cancers
- » Genetic testing
- » Chemotherapy
- » Intraperitoneal chemotherapy for advanced-stage ovarian cancer, including Hyperthermic Intraperitoneal Chemotherapy (HIPEC)
- » Clinical trials: early access to novel targeted therapies and immunotherapy agents i
- » Individualized treatment plans
- » Intensity-modulated radiation therapy (IMRT) with image guidance
- » Image guided HDR brachytherapy
- » Stereotactic Body Radiation Therapy (SBRT)
- » Survivorship
- » Patient and family support groups
- » Program in Integrative Sexual Medicine (PRISM)



A Cancer Center Designated by the  
National Cancer Institute