

# Comprehensive Gynecologic Cancer Care Program



AT THE FOREFRONT

**UChicago  
Medicine**

## ENSURING THE BEST CARE

- » We work quickly to expedite patient consultations and provide an individualized, comprehensive diagnostic and treatment plan for each patient, which may include surgery, chemotherapy and/or radiation treatments.
- » Our highly experienced gynecologic oncologic surgeons provide expert surgical treatment for ovarian, uterine, cervical, endometrial, vulvar and vaginal cancers.
- » Our nationally recognized experts, including our National Cancer Institute-designated Comprehensive Cancer Center team, can review a patient's case and assist with detection, diagnosis and treatment for gynecologic cancers that range from common to the most complex cases.
- » We offer a large number of clinical trials involving innovative treatments for gynecologic cancers.
- » We are a lead site for NRG Oncology, a cooperative clinical trials group that is responsible for more gynecologic cancer research than any other research group in the United States.
- » Patients have access to our nationally and internationally known team of specialists who meet weekly in a multidisciplinary conference to discuss cases and treatment plans.
- » Optimal survivorship and supportive care is always incorporated for a comprehensive patient-centered approach to the continuum of cancer care.

## WE OFFER PATIENTS

- » Expert consultations, surgery and follow-up care close to home across the Chicagoland and NW Indiana communities.
- » Collaborative team approach with experts in medical oncology, cancer genetics and radiation oncology for comprehensive treatment planning to optimize care.
- » Personalized treatments and expertise in surgery to optimize recovery and outcomes, including minimally invasive, robotic and fertility-sparing surgery.
- » Access to PRISM, an internationally recognized multidisciplinary program designed to address the sexual function needs of women and girls diagnosed with cancer.
- » Gynecologic cancer survivorship care and expertise in surveillance, support and care coordination after a cancer diagnosis.
- » Coordination of supportive oncology services, including social work, physical therapy, psych-oncology, nutrition and wellness and psychosocial support.

**We are committed  
to working with  
you to provide the  
best care.**

I would like to introduce our program for women with gynecologic cancers, including ovarian, uterine, cervical, endometrial, vulvar and vaginal cancers.

Our multifaceted team of specialists consistently works to discover novel methods of detecting and treating gynecologic cancers. We are able to offer patients a wide variety of treatment options, including newer therapies, for individualized care.

We are excited to offer our unique expertise and work with you every step of the way.

Best regards,

**S. Diane Yamada, MD**

*Professor of Obstetrics & Gynecology  
Chief, Section of Gynecologic  
Oncology*

## PATIENT CARE LOCATIONS

### Hyde Park

Duchossois Center for Advanced  
Medicine (DCAM)  
5758 S. Maryland Ave., Third Floor

### New Lenox

Silver Cross Hospital Campus  
Pavilion A  
1890 Silver Cross Blvd., Suite 475

### Orland Park

14290 S. La Grange Road, Third Floor

### Schererville, Indiana

University of Chicago Health Specialists  
222 S. Indianapolis Blvd., Suite 200

### To make an appointment

1-888-824-0200

[Cancer.Appointments@uchospitals.edu](mailto:Cancer.Appointments@uchospitals.edu)  
*Patient appointments or consultations*

### UCM Connect

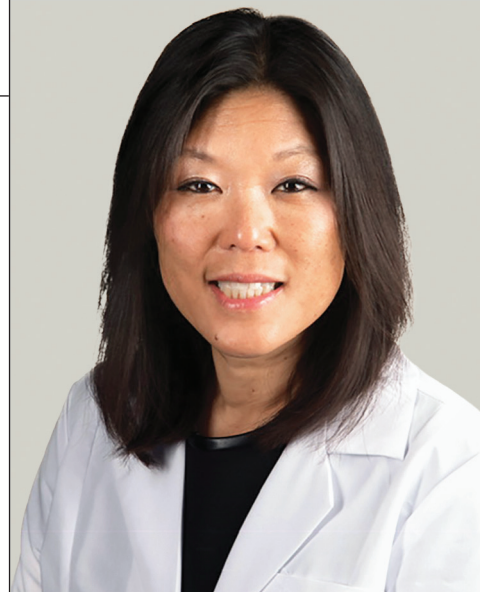
1-800-824-2282

*Referrals*

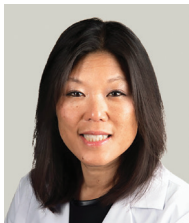
### UCM Transfer Connect

1-855-834-4782

*Urgent patient transfers*



UCHICAGOMEDICINE.ORG



**YAMADA**  
Section Chief



**KIM**



**LEE**



**LENGYEL**



**MORONEY**



**MILLS**



**KURNIT**



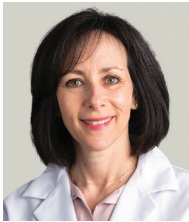
**FLEMING**



**ROMERO**



**HASAN**



**LINDAU**



**HASSENFRITZ**



**HAWLEY**



**SORKIN**

## Physicians

### GYNECOLOGIC ONCOLOGY

**S. Diane Yamada, MD**  
Professor of Obstetrics & Gynecology  
Chief, Section of Gynecologic Oncology

**Josephine Kim, MD**  
Assistant Professor of Obstetrics & Gynecology

**Nita Karnik Lee, MD, MPH**  
Assistant Professor of Obstetrics & Gynecology

**Ernst Lengyel, MD, PhD**  
Professor of Obstetrics & Gynecology  
Chair, Department of Obstetrics & Gynecology

**John Moroney, MD**  
Associate Professor of Obstetrics & Gynecology

**Kate Mills, MD**  
Assistant Professor of Obstetrics & Gynecology

**Katherine Kurnit, MD**  
Assistant Professor of Obstetrics & Gynecology

### MEDICAL ONCOLOGY

**Gini Fleming, MD**  
Professor of Medicine  
Director, Medical Oncology - Breast Program/Gynecologic Oncology

**Simona Chivu, MD**  
Clinical Associate of Medicine,  
Comprehensive Cancer Center  
at Silver Cross Hospital

**Sunil Narula, MD**  
Clinical Associate of Medicine,  
Comprehensive Cancer Center  
at Silver Cross Hospital

**Shayan Rayani, MD**  
Clinical Associate of Medicine,  
Comprehensive Cancer Center  
at Silver Cross Hospital

**Grace Suh, MD**  
Clinical Associate of Medicine,  
Comprehensive Cancer Center  
at Silver Cross Hospital

### CANCER RISK GENETICS

**Iris Romero, MD, MS**  
Associate Professor of Obstetrics & Gynecology

### PATHOLOGY

**Jennifer Bennett, MD**  
Assistant Professor of Pathology

**Ricardo Lastra, MD**  
Assistant Professor of Pathology

### RADIATION THERAPY

**Yasmin Hasan, MD**  
Assistant Professor of Radiation & Cellular Oncology

**Daniel W. Golden, MD**  
Assistant Professor of Radiation & Cellular Oncology,  
Comprehensive Cancer Center  
at Silver Cross Hospital

**Anne R. McCall, MD**  
Assistant Professor of Radiation & Cellular Oncology  
Medical Director for Radiation Oncology, Comprehensive Cancer Center at Silver Cross Hospital

### RADIOLOGY

**Pritesh Patel, MD**  
Assistant Professor of Radiology

**David Paushter, MD**  
Professor of Radiology  
Chair, Department of Radiology

### SEXUAL HEALTH

**Stacy Lindau, MD, MA**  
Professor of Obstetrics & Gynecology and Medicine-Geriatrics  
Director, Program in Integrative Sexual Medicine (PRISM)

## Chemotherapy Nurses

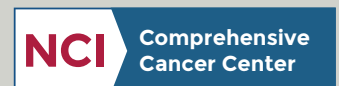
**Connie Stewart, RN**  
**Julie Lutz, RN, APN**

## Physician Assistants

**Libbe Hassenfritz, PA-C**  
**Kathryn Hawley, PA-C**  
**Mia Sorkin, PA-C**

## Our Services

- » Expert surgical care
- » Multidisciplinary approach
- » Survivorship
- » Cancer Risk Clinic for patients at risk for hereditary cancers
- » Chemotherapy
- » Clinical trials: early access to novel chemotherapy agents including immunotherapy and PARP inhibitors
- » Fertility-sparing surgery and fertility preservation
- » Genetic testing
- » Individualized treatment plans
- » Intensity-modulated radiation therapy (IMRT)
- » Intraperitoneal chemotherapy for advanced-stage ovarian cancer, including Hyperthermic Intraperitoneal Chemotherapy (HIPEC)
- » Laparoscopic and robotic surgery
- » Patient and family support groups
- » Program in Integrative Sexual Medicine (PRISM)
- » Radiation therapy, including brachytherapy



A Cancer Center Designated by the National Cancer Institute